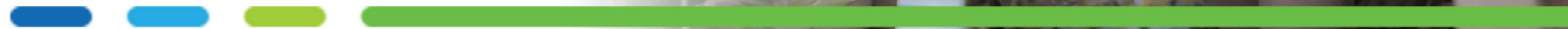




CORPORATE PROFILE





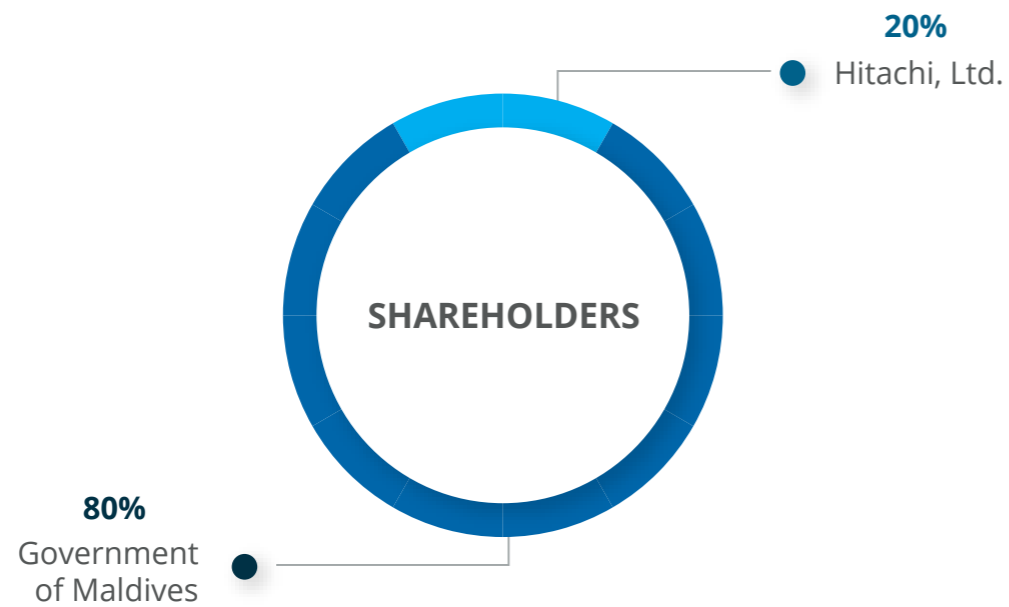
Overview

Established in 1st April 1995, Male' Water and Sewerage Company is the pioneer organization in the Maldives to administrate a water production and wastewater management system to counter the issue of water shortages and a lack of an appropriate sewer system in the capital island Male'.

Since then, the Company has worked diligently to provide the people of Male' with potable fresh water and managing wastewater sustainably. Today, MWSC proudly serves over 50% of the Maldivian population.



SHAREHOLDERS



To provide safe water and sewerage services that is sustainable, affordable and environment friendly.

Vision



To contribute to the continuous development of the Maldivian Society, and improve the quality of life of its people, through the provision of safe water and sewerage services

Mission



M I L E S T O N E S

YEAR	KEY MILESTONE
1995	Company inception on 1st April.
1996	Commencement of water and wastewater services in Male'.
1998	Installed SCADA system to automatically manage water production and distribution in operation centres.
2001	Operation and maintenance of water & wastewater services at Villimale' handed over to MWSC.
2004	Commencement of water and wastewater services in Hulhumale'.
2004	Engineering solutions for water and wastewater began as a commercial venture.
2006	Inaugurated Fen Building to centralise all administrative functions under one roof.
2008	Commencement of water services in K. Thilafushi Island.
2008	Installed internationally recognized Enterprise Resource Planning System – SAP to efficiently administer MWSC's work.
2009	Commencement of water services in K.Maafushi island.
2011	Commencement of water and wastewater services in Hdh. Kuldhuffushi island.
2011	Commencement of water and wastewater services in K. Gulhifalhu island.
2011	Manufacturing Centre established in Hulhumale'.
2011	Commencement of PET preforms and shrink film manufacturing.
2011	Commencement of renewable energy venture.
2012	Commencement of wastewater services in K.Maafushi island.

YEAR	KEY MILESTONE
2013	Completion of reclamation project of K.Gulhifalhu island.
2015	Commencement of PE and PVC pipes manufacturing in K. Gulhifalhu island.
2016	Launched the brand 'MWSC Utility Solutions' to promote utility infrastructure development to resort market.
2016	MWSC Showroom inauguration.
2017	Attained ISO 9001: 2015 Quality Management and System for developing risk-based approach to quality management system.
2017	Inaugurated 'RO Annex' – 5000 CBM Water Production Centre, as part of Greater Male' Region Water Security.
2017	Attained HACCP Food Safety Management System and ISO 22000; 2005 Quality Management.
2017	Launched MWSC Mobile Application to enhance customer services.
2018	Commenced pipeline connection work via the Male'-Hulhumale' Bridge, as part of Greater Male' Region Water Security.
2018	Inaugurated 'RO Annex 1' – 2000 CBM Water Production Centre, as part of Greater Male' Region Water Security.
2018	Inaugurated Customer Service Building to provide quality and convenient customer services under one roof.
2019	Launched 24/7 Customer Care with 105 hotline number and e-Portal feature to apply for utility services remotely.
2022	Launched ARO Premium Water, Maldives's first premium water bottled in glass
2023	Launched Lab equipment calibration services for the first time in Maldives, as part of increasing the portfolio of MWSC Lab.



Core Business Units



Utility Services

Since the inception of the Company, it has built all its strategies around the corporate objective of providing safe water and sewerage services which are sustainable, affordable and environmentally friendly.

Even today, nearly 56 percent of the Company's revenue is derived from utility services operations.



MWSC provides safe water and sewerage services for over 50% of the Maldivian population

1

WATER SERVICES

At MWSC, safe water is provided to the public after desalinating groundwater into potable drinking water through the process of reverse osmosis. Water produced and distributed by the Company adheres to the standards set by Environmental Protection Agency (EPA) in the Maldives.

3

ELECTRICITY SERVICES

In 2014, MWSC embarked on providing electricity services to the people of Dhuvaafaru, under its Integrated Utility Services model. Power is mainly generated through diesel, although the Company is now shifting towards renewable energy as a form of power generation.

2

WASTEWATER SERVICES

MWSC operates the sewerage system of Malé, Hulhumalé, Villimalé, Maafushi, Dhuvaafaru and Kulhudhuffushi by means of a gravity collection system and effluent is discharged to the open ocean by means of pump stations and sea outfalls.

4

WASTE MANAGEMENT SERVICES

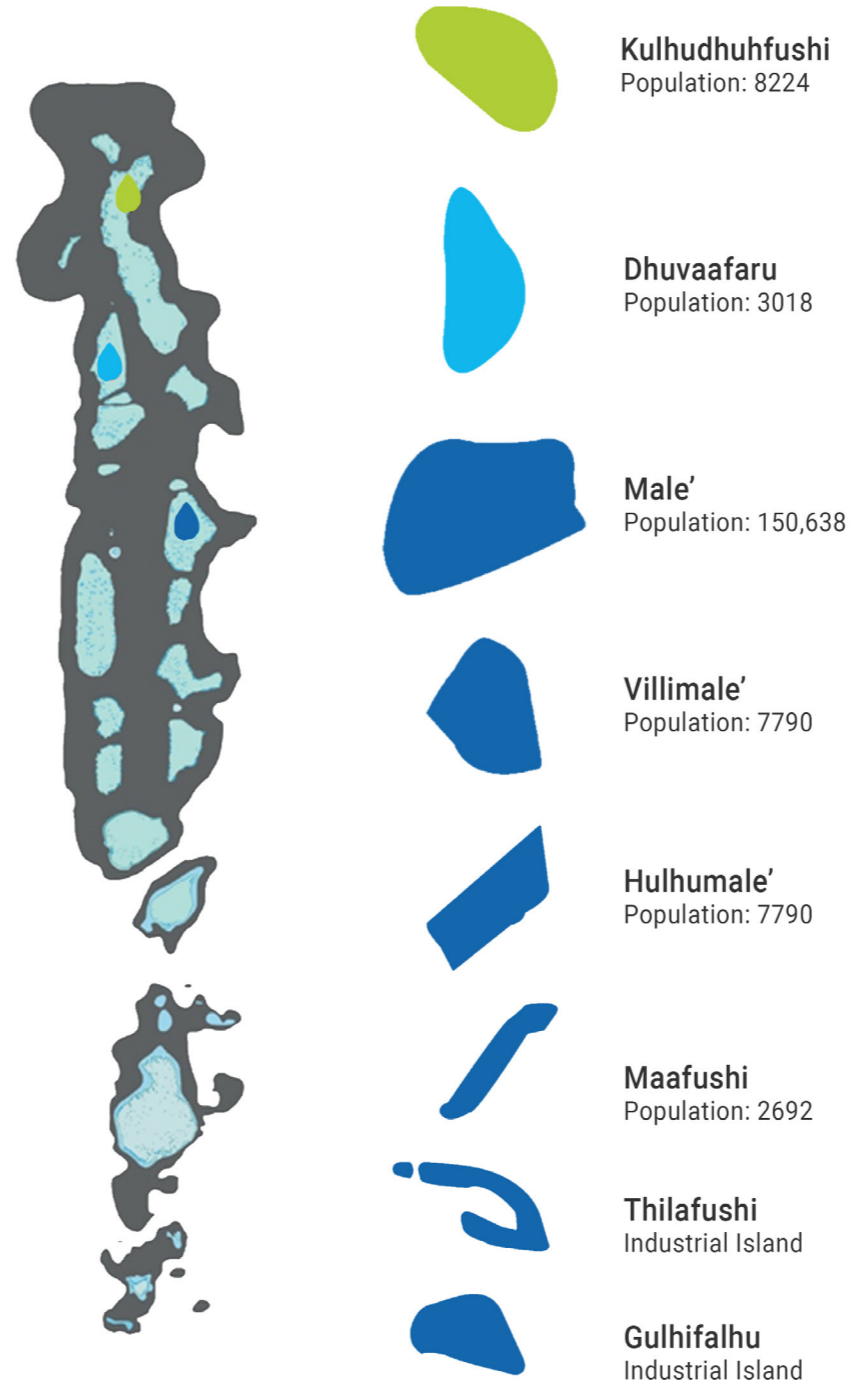
One of the key services implemented as part of the Integrated Utility operations is solid waste management services. As part of this service, MWSC collects segregated solid waste from households and incinerates or composts the waste to continue provision of service in a sustainable manner.



Utility Services

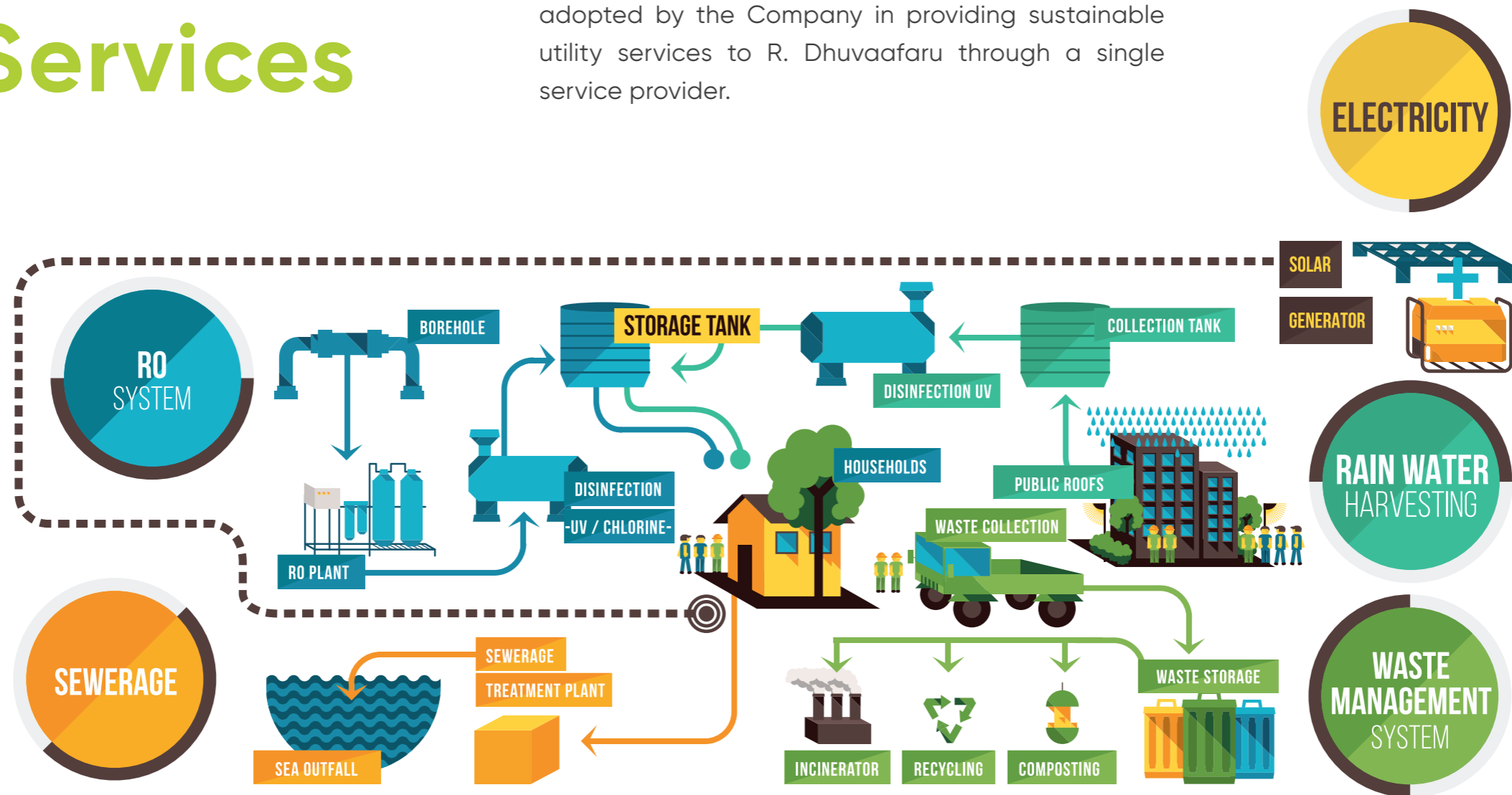
MWSC Operation Centers

Operation Centres of the MWSC has expanded to other islands, including K. Villingili, K. Hulhumale', K. Maafushi, K. Thilafushi, K. Gulhufalhu, Hdh. Kulhuduffushi and R. Dhuvaafaru



Utility Integrated Services

The Integrated Utility Services approach was adopted by the Company in providing sustainable utility services to R. Dhuvaafaru through a single service provider.



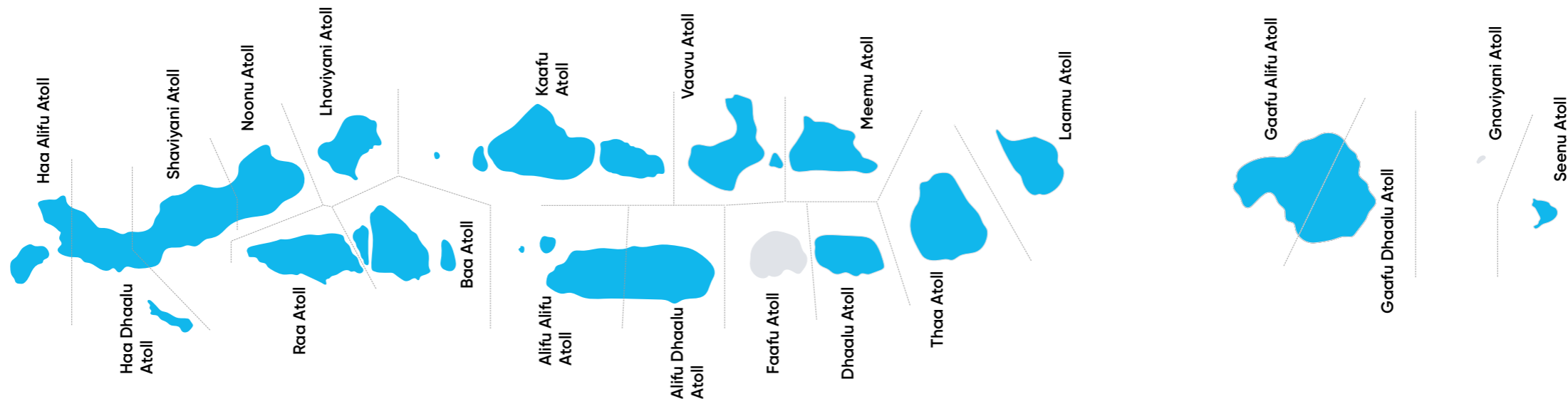
Engineering

Over the years, the Company has transformed from a public utility service company to a multi-disciplined Engineering Company with its vision of contributing to the infrastructure development of the country and for its own growth in operations.

As the leading turnkey solutions provider, MWSC provides total solutions to deliver best quality potable water and wastewater systems, from design and build to operations. We also now have the technical capacity to fabricate

RO plants on our own, making us self-sufficient & specialized.

Highlighted atolls represent the completed water and sewer projects by MWSC



MWSC has completed more than 45 water & sewerage projects in the Maldives.



Trading



MWSC Showroom opened its doors in 2016. MWSC Showroom is a convenient platform for obtaining water and wastewater related products and accessories, strengthening MWSC's trading efforts. Among the products and services that are available from MWSC Showroom include Water Quality Assurance services, RO plant, membranes and spares, PVC and PE pipes and fittings, water meters, and valves from world renowned brands.



MWSC Showroom provides quality and reliable products for water and wastewater needs.



Manufacturing

As a means of diversification, MWSC ventured into the manufacturing business in 2004.



MWSC employs an innovative culture whereby the Company continuously seeks efficient methods of providing and sustaining its services.

BOTTLING OPERATION

1

IBM, a joint venture company of MWSC and Champa Brothers Pvt. Ltd launched and introduced TaZa water bottles to the market on 7 October 2004. As the main manufacturer of Taza brand bottles, MWSC currently produces mineralized pure drinking water of sizes 330ml, 500ml, 1500ml, and 5000ml while IBM produces 5000ml bottles. In 2019, MWSC further extended bottling operations by starting production of bottled water in Dhuvaafaru Island, with the aim of expanding the distribution of Taza bottled water in the northern region of the country.

ICE MANUFACTURING

3

In 2013, the Company commenced ice flake manufacturing in R. Dhuvaaafaru, with the objective of catering for the ice requirement of the local fishermen of Dhuvaaafaru and neighboring atolls. Fisheries sector being a key strategic industry for the national economy, it is a privilege for the Company to have engaged in this industry, and contribute towards the development of the sector and life of the local fishermen.

PET PREFORM MANUFACTURING

2

In 2011, MWSC further expanded manufacturing operations, by starting the operation of manufacturing PET pre-forms. The Company, with state-of-the-art molding machineries located in K. Hulhumale', can now produce high quality PET pre-forms that would cater to the bottling industry in the country, as well as overseas.

PIPE MANUFACTURING

4

Our vision of transforming into a multidisciplinary engineering company has paved way in becoming the first manufacturer of high quality pipes under our own brand. "FenPipe" brand was launched in 2015, with the manufacture of PE and PVC pipes under a European License and strictly adhere to International Quality Standards, later rebranded as "Rajje Holhi" MWSC has adopted ISO standard in manufacturing "Rajje Holhi" in its own state-of-the-art factory with modern machinery and equipment. The technology used by 'Wavin', one of the leading pipe manufacturer globally, is adopted in the production of pipes



Quality Assurance

To ensure that the quality of water supplied is consistent, a fully equipped laboratory is established. Adhering to international standards of ISO 17025, the quality assurance laboratory:

- Ensures that the quality of supplied water meet the standards of EPA
- Ensures continuous improvement of water quality
- Provides reliable wastewater disposal solutions to ensure public safety while sustaining protection to natural environment.

Our bottling factories are HACCP/ISO 22000 Food Safety Management System certified factories which ensures our quality and food safety.

Moreover, MWSC is certified for ISO 9001 Quality Management System & ISO 45001 Occupational Health and Safety Management System, reinforcing MWSC's strong operational processes and commitment for continual improvement.



We continually monitor physical, microbiological and chemical quality of our water. Tests are carried out daily on piped water to check whether the water distributed meets the standards.

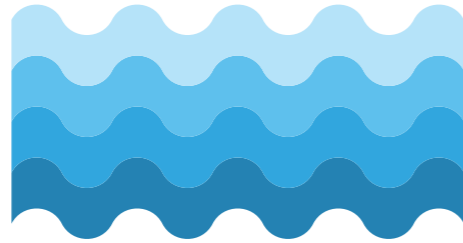


Corporate Social Responsibility

We recognize our responsibility in creating a positive difference in the lives of local communities through contributing to public-private institutions, non-government organizations and island communities for the sustainable development of education, health, environment sectors and for fostering youth development.

“At MWSC, we believe in being a responsible corporate citizen in the community we operate.”





Continuous technical assistance extended to the Government in survey, design, assessment of existing and new networks in rural islands.

Bottled water cases donated as support for various organizations annually.



Investments over

MVR 4 MILLION

made annually as charitable support for education, environment, health, and sports sectors.

COMMUNITY SUPPORT

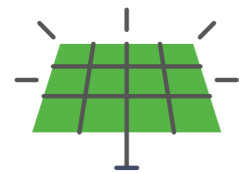


Energy audits conducted every year to assess GHG emissions and identify SES opportunities

PRESERVING THE ENVIRONMENT



PROMOTING SOCIAL AWARENESS



Over 500 KW of Solar Photo Voltaic plants installed across different operation centers

Digital services enhancement.



Advocating safe application of home sewer systems to sustainably safeguard the capital's wastewater networks.

Public awareness campaign on water-use efficiency and conservation.



The MWSC Team

The greatest asset at MWSC continues to be its people – their dedication, skill and teamwork. With manpower of over 1200 employees, MWSC encourages all employees to realize their true potential and use their talents to succeed. Assuming a culture of teamwork, the challenges of establishment and growth has always been confronted with relentless efforts by its people. Our employees embrace diversity and inclusion in the truest sense of the word within our workplace, and the success of the Company will always lie with its keen team of staff.



Fen Building, 5/f, Ameenee Magu, Machchangolhi, 20375, Male', Republic of Maldives

+960 332 3209 | mail@mwsc.com.mv | www.mwsc.com.mv

Revised by 2023 | Male' Water & Sewerage Company Pvt. Ltd

